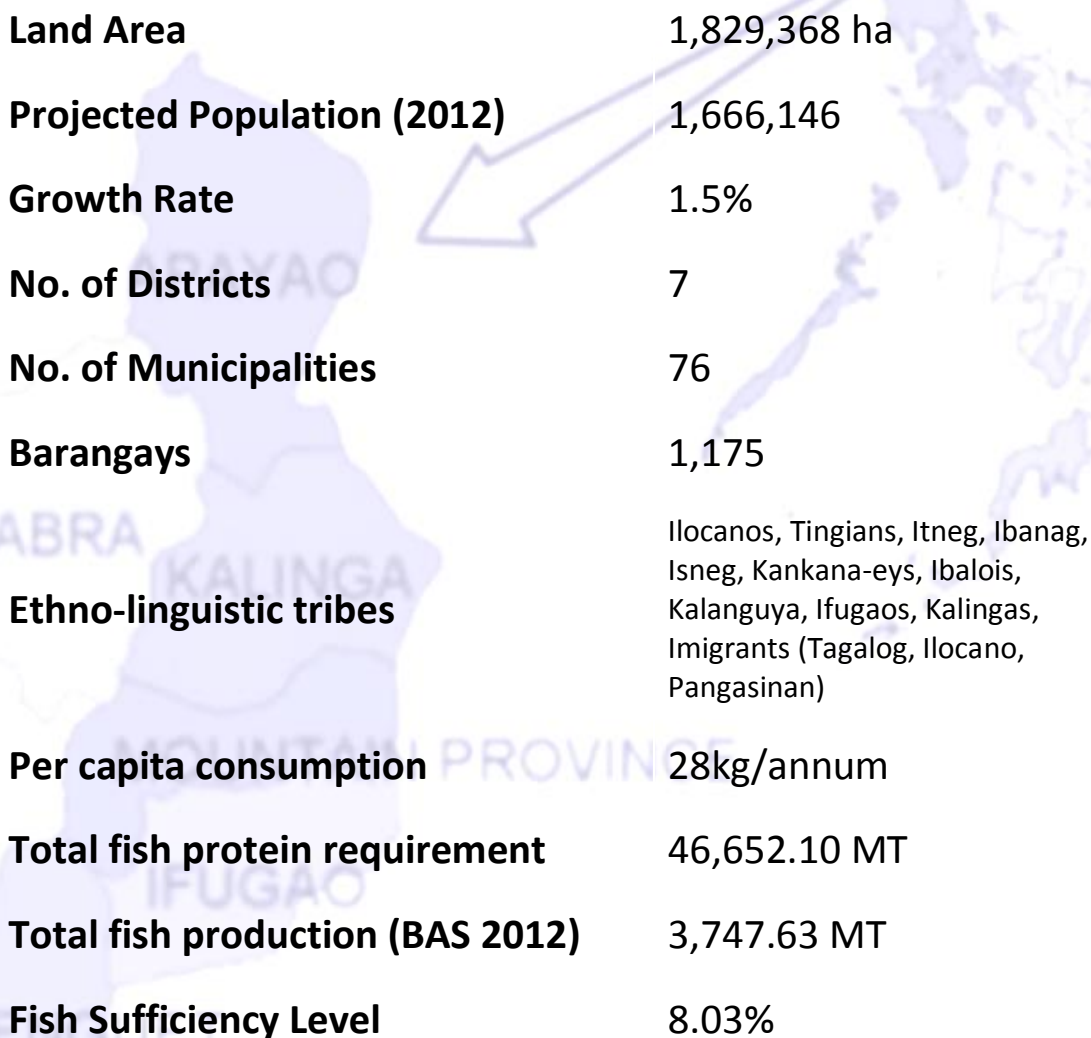


Cordillera Administrative Region Fishery Profile

Basic Facts:



Land Area	1,829,368 ha
Projected Population (2012)	1,666,146
Growth Rate	1.5%
No. of Districts	7
No. of Municipalities	76
Barangays	1,175
Ethno-linguistic tribes	Ilocanos, Tingians, Itneg, Ibanag, Isneg, Kankana-eyes, Ibalois, Kalanguya, Ifugaos, Kalingas, Imigrants (Tagalog, Ilocano, Pangasinan)
Per capita consumption	28kg/annum
Total fish protein requirement	46,652.10 MT
Total fish production (BAS 2012)	3,747.63 MT
Fish Sufficiency Level	8.03%

CORDILLERA ADMINISTRATIVE REGION REGIONAL FISHERY PROFILE



**Fishpond = 68.31 ha.
of Operators = 1,188**

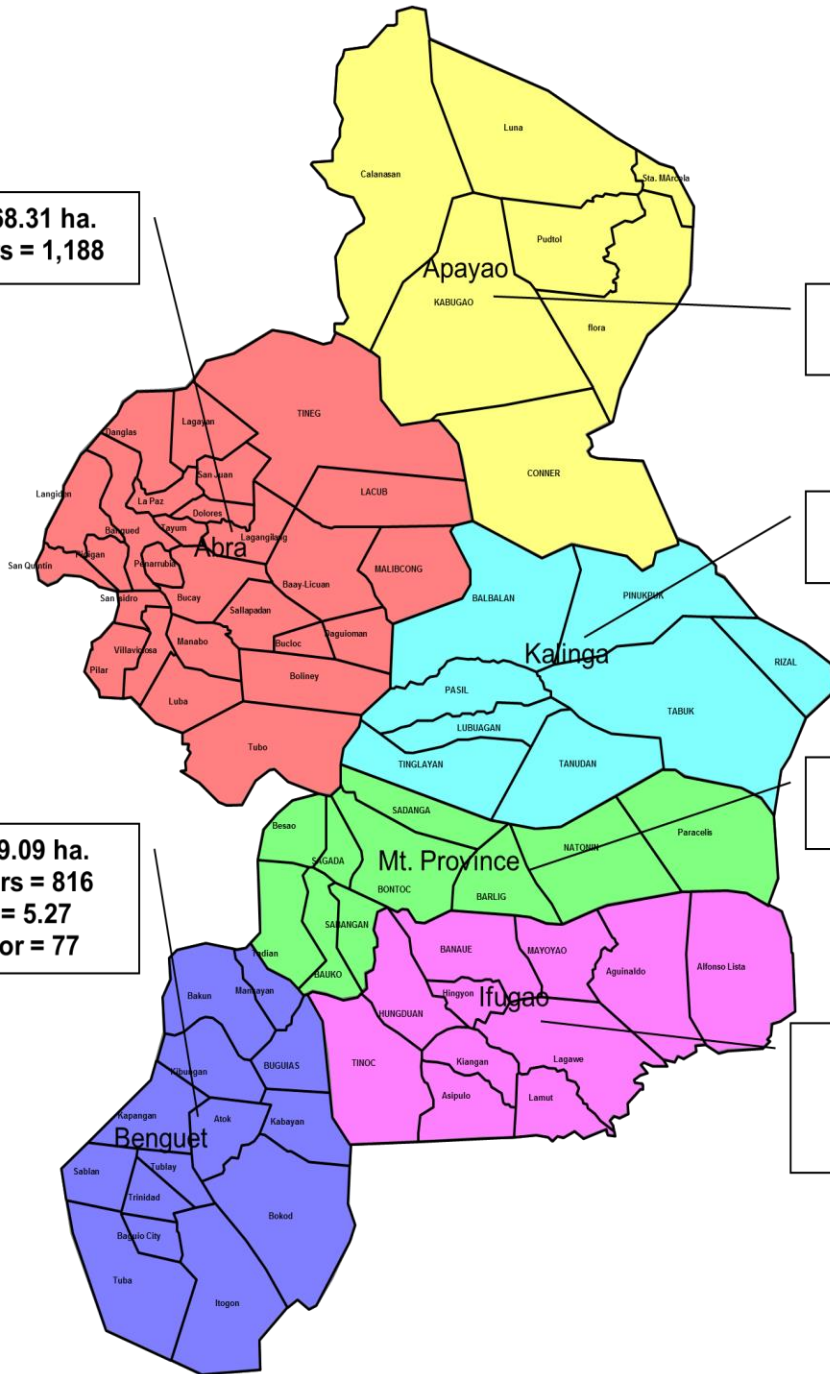
**Fishpond = 31.67 ha.
of Operators = 759**

**Fishpond = 40.61 ha.
of Operators = 706**

**Fishpond = 8.73 ha.
of Operators = 855**

**Fishpond = 9.09 ha.
of Operators = 816
Fish Cage = 5.27
of Operator = 77**

**Fishpond = 67.23 ha.
of Operators = 302
Fish Cage = 31.00
of Operators = 455**



Cordillera Map

CAR River Systems

Name of River System	Drainage Area (Sq. Kms.)	Source of Headwater	Facilities Supported	Outlet
ABRA RIVER	5,125.00	Abra, Mt. Prov. & Benguet	Irrigation & Domestic Use	Luzon Sea at Ilocos Sur
ABULOG-APAYAO RIVER	3,372.00	Apayao	Irrigation & Domestic Use	Cagayan River
AGNO RIVER	5,952.00	Benguet	Hydro-electric & Irrigation	Luzon Sea at Pangasinan
AMBURAYAN RIVER	1,386.00	Benguet	Hydro-electric & Irrigation	Luzon Sea at La Union
BUED RIVER	150.29	Benguet & Baguio City	Irrigation & Domestic Use	Luzon Sea at La Union
CHICO RIVER	4,588.00	Benguet, Mt. Prov. & Kalinga	Mini-hydro-electric dams & Domestic	Cagayan River
NAGUILIAN RIVER	76.09	Benguet	Irrigation	Luzon Sea at La Union
SIFFU-MALLIG RIVER	1,938.00	Ifugao & Mt. Province	Irrigation & Domestic Use	Cagayan River

Source: DENR-CAR

CAR Fishery Resources (AQUACULTURE)

FISHPONDS (Private)

LOCATION	# OF OPERATOR	AREA (HA.)
ABRA	1,188	68.31
APAYAO	759	31.67
BENGUET	820	9.09
IFUGAO	302	67.23
KALINGA	706	40.61
MT. PROVINCE	855	8.73
TOTAL	4,630	225.64

*Source: BAS-CAR Inventory Report CY 2005
PLGU, CY2012 (for Abra)*

CAR Fishery Resources (AQUACULTURE)

FISHCAGE (Private)

LOCATION	# OF OPERATOR	AREA (HA.)
BENGUET	77	5.28
IFUGAO	455	31.00
TOTAL	532	36.28

Source: BAS-CAR Inventory Report CY 2005

POTENTIAL AREA FOR RICE FISH CULTURE

LOCATION	STATUS	AREA (HA.)
ABRA	Irrigated/highland	894
APAYAO	Irrigated/lowland	800
BENGUET	Irrigated/highland	2,996
IFUGAO	Irrigated/highland	4,941
KALINGA	Irrigated/highland	4,086
MT. PROVINCE	Irrigated/highland	5,715
TOTAL		19,432

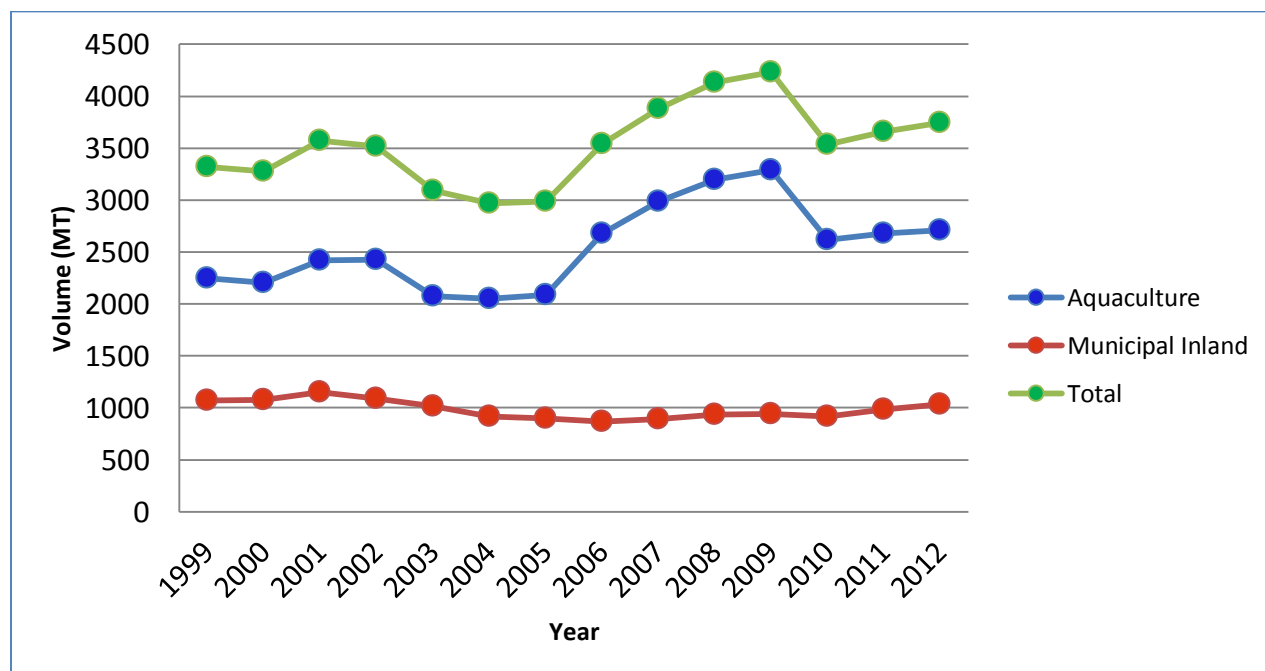
Note: 10% of DA-CAR Inventory for Rice Area CY 2006

POTENTIAL EXPANSION AREA FOR FISHPONDS

LOCATION	AREA (HA.)
ABRA	5
APAYAO	20
BENGUET	30
IFUGAO	83
KALINGA	3
MT. PROVINCE	3
TOTAL	144

VOLUME of FISH PRODUCTION in CAR by SECTOR (MT) 1999-2012

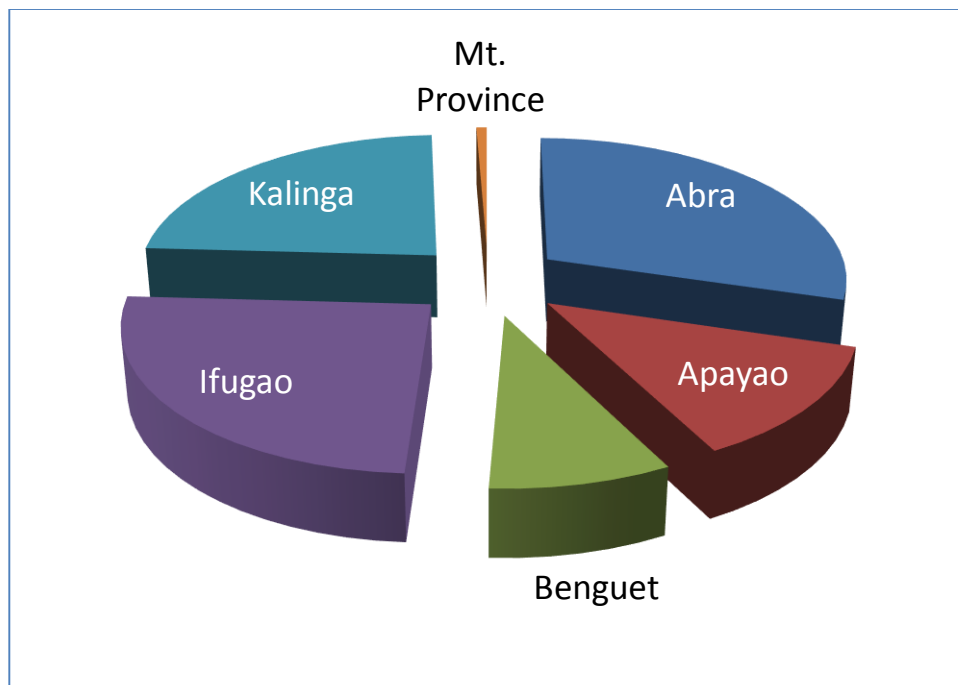
Year	Municipal Inland	Aquaculture	Total Production	Sufficiency Level (%)
1999	1,071.00	2,247.00	3,318.00	8.79
2000	1,075.00	2,204.00	3,279.00	8.58
2001	1,150.00	2,422.00	3,572.00	9.21
2002	1,090.00	2,426.00	3,516.00	8.93
2003	1,018.00	2,073.85	3,091.85	7.74
2004	915.21	2,052.82	2,968.03	7.32
2005	899.00	2,087.80	2,986.80	7.25
2006	867.21	2,676.02	3,543.23	8.48
2007	893.22	2,987.99	3,881.21	9.11
2008	934.38	3,195.56	4,129.94	9.46
2009	940.21	3,288.51	4,228.72	9.45
2010	915.49	2,618.72	3,534.21	7.81
2011	983.42	2,676.19	3,659.61	7.93
2012	1,035.74	2,711.89	3,747.63	8.03



- The highest fish production is evident in the year 2009 with 4,228.72 MT whereas the least fish production of about 2968.03 MT is observed during the year 2004. The occurrence of El Niño in the region from 2003 to 2005 has caused the apparent decrease in the fish production more specifically in the province of Ifugao.

TOTAL MUNICIPAL INLAND FISH PRODUCTION (MT) in 2012

PROVINCE	Municipal Inland (MT)	%
Abra	306.89	30
Apayao	131.94	13
Benguet	87.52	8
Ifugao	259.39	25
Kalinga	243.36	23
Mt. Province	6.64	1
Total	1,035.74	100



TOTAL AQUACULTURE FISH PRODUCTION (MT) in 2012

PROVINCE	Aquaculture (MT)	%
Abra	482.50	18
Apayao	182.16	7
Benguet	324.89	12
Ifugao	1,494.70	55
Kalinga	214.50	8
Mt. Province	13.15	0.5
Total	2,711.89	100

